



REGIONAL FORESTERS UPDATE

Jeremy Douse

Northern Region Forester

Staffing updates

New Staff

- Fairbanks Area Forester – Kevin Meany
- Coastal Region Forester – Steve Connelly
- FRPA Forester – Pat Palkovic

Vacancies

- Fairbanks Resource Forester
- SE Resource Forester 3

New Positions

Increasing capacity in Admin support, Fuels,
Foresters and Fire Fighters



Fire and Fuels - Coastal

- Southwest –
 - MTNT - shaded fuel breaks and mitigation around community refuse sites. 262 acres protecting 560 homes.
- Mat-Su –
 - Sunset – Mechanical 133 acres to start this winter
 - Caswell/hidden hills road 320 acre shaded fuel break in progress
 - Lynx Lake Road 150 acre shaded fuel break in progress
- Kenai –
 - Kenai Peninsula College campus 150 acre shaded fuel break to start this winter
 - Forest Lane – 103 acre shaded fuel break and commercial thinning.

Fire and Fuels - Northern

Fairbanks

- Old Murphy Dome fuel break Maintenance - 603 acres completed
- Goldstream shaded fuel break – 23 acres (burn piles) finishing up this year
- Vista Gold shaded fuel break– 17 acres - ongoing

Delta

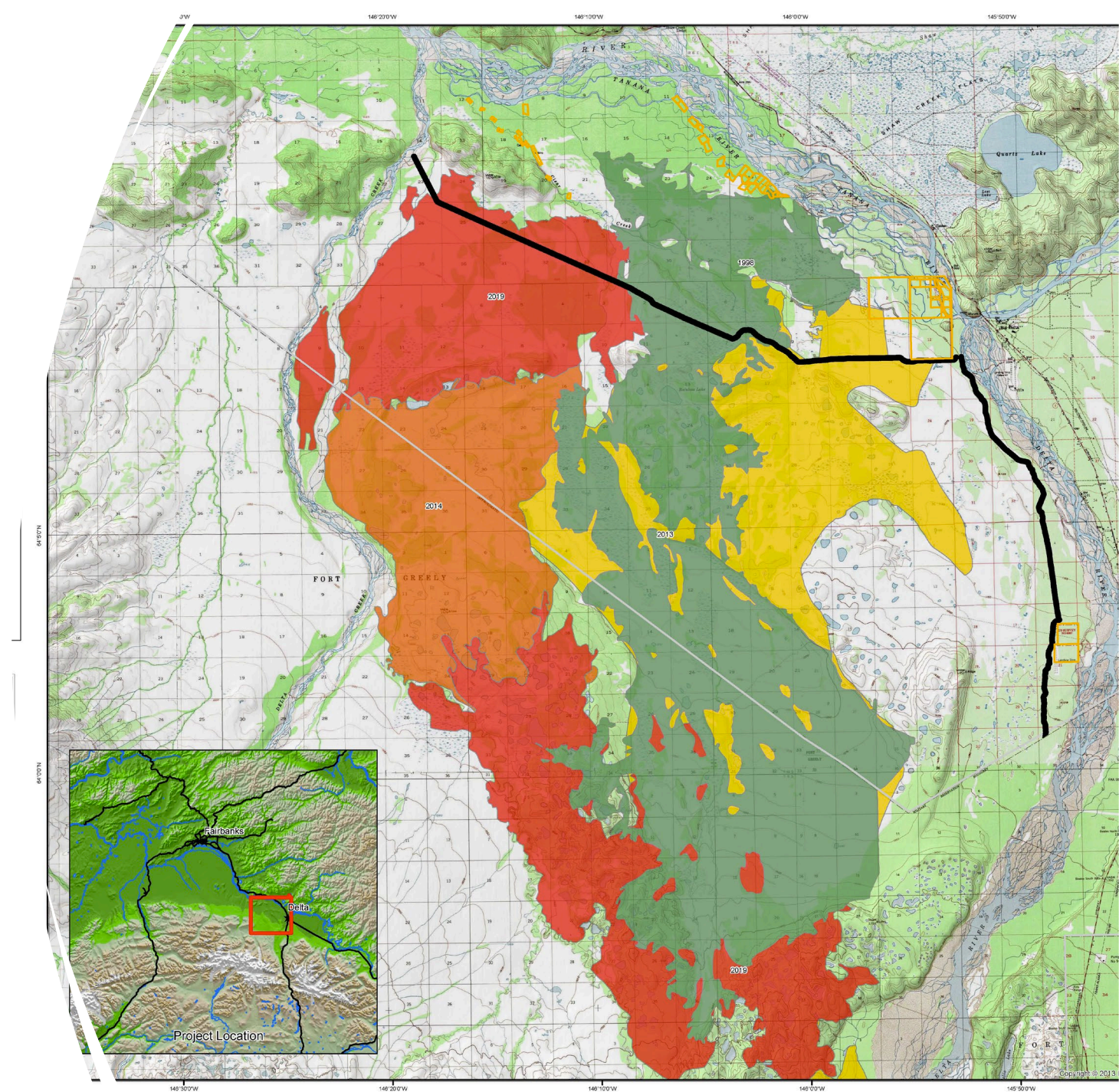
- Delta River West fuel break – Phase one B – 374 acres

Tok

- Eagle subdivision shaded fuel break – Phase one - 64 acres
- Redfox – timber units to break up continual spruce.
- Southroad grouse/moose habitat – ADF&G Rx burn - planning

Copper River

- CWPP – Kenny Lake, Copper Center, Tazlina, Lake Louise, Slana, Mendeltna and Nelchina
- Glennallen Fuel break maintenance





Fire Season

3.1 million acres

Southwest

- **Lime Complex 865,620 acres**
 - Geographic area the size of Ohio
 - Both Alaska Type 2 teams

Fairbanks/Delta

- **Clear 72,185 acres**
 - Number 1 priority fire in the nation
 - Fatality fire
 - Northern Rockies Type 1
- **Minto Lakes 37,554 acres**
 - North of Fairbanks
 - California Type 1
- **Middle Tanana complex 60,861 acres**
 - Complex of 9 fires north of Delta
 - Idaho type 3 team

Personal Use Firewood

- Starting to see the normal seasonal increase in personal use permits.
- August – November activity
 - 179 permits, 666 cords mostly coming from Fairbanks, Mat-su and Delta.



Timber Sales FY22 – All areas



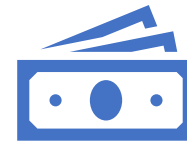
34 sales offered and sold –
23 NR, 11 CR



1,029 Acres -
761 NR, 268 CR



An equivalent of 9.4
MMBF
(4.7 MMBF Southeast)



\$1.7 million in Stumpage
(\$210K NR, \$1.5 mil CR)

Southeast Sale Planning

- Whales Pass –
 - 290 acres ~4.7 MMBF
- El Capitan
 - 340 acres ~ 8 MMBF (PBIF)
- Staffing continues to be a challenge
 - Acting positions
 - Non-perms
 - Contractors



NR Active Sales

- 5 small sales sold since July. Two in Delta, two in Fairbanks and one in Copper River.
- 26 active sales in the Northern Region



Forest Inventory

- FIA – working out of Sleetmute and Aniak
 - Same location as the Lime Complex
 - – 154 plots installed
- FHM/ Evaluation Monitoring Grant
 - 24 CAFI plot remeasurements
- Fort Wainwright Forest Inventory
 - 4 plots completed,
- Levels of Growing Stock
 - Completed the 13 White Spruce and Lodgepole plots near Tok

